

## SAM2 Church Layby 19<sup>th</sup> November – 17<sup>th</sup> December 2018

The SAM2 was placed in the church layby for four weeks, for the first two weeks, the sign was covered so that although it was recording vehicle speeds, the speed was not made available to the traffic going past, for the remaining two weeks the cover was removed. The sign faced east for the first week, west for the next two weeks and east for the last week.

The speed of traffic recorded from the west facing east did not seem to be affected by the cover, about 5% of traffic was recorded travelling about 35 mph. Whereas, when the sign was facing west, a slightly higher percentage of vehicles (6%) was recorded at speeds above 35mph when the sign was covered.

There are two days on which a large number of vehicles are recorded as travelling at speeds < 20 mph, which suggests congestion of some sort.

These data were discussed at the parish council meeting at the end of January when it was agreed that traffic does appear to be travelling at the speed limit, the presence of the community speed watch program in addition to the reminders from the SAM2 appear to be having a positive impact on the speed of vehicles in the village.

Table 1  
Church Layby from West, Vehicle Speeds by Cover and Day  
Week 1: 19Nov2018 - 27Nov2018, Week 4: 10Dec2018 - 17Dec2018

| Covered? | Day       | Recorded Speed<br>(mph) |                |               |              |             |
|----------|-----------|-------------------------|----------------|---------------|--------------|-------------|
|          |           | <20                     | 20 - 29        | 30 - 34       | 35 - 54      | >= 55       |
| No       | Sunday    | 99 ( 4.62%)             | 1573 (73.44%)  | 356 (16.62%)  | 113 ( 5.28%) | 1 ( 0.05%)  |
|          | Monday    | 159 ( 4.83%)            | 2644 (80.29%)  | 387 (11.75%)  | 99 ( 3.01%)  | 4 ( 0.12%)  |
|          | Tuesday   | 207 ( 5.67%)            | 2903 (79.45%)  | 421 (11.52%)  | 117 ( 3.20%) | 6 ( 0.16%)  |
|          | Wednesday | 308 ( 8.20%)            | 2961 (78.81%)  | 372 ( 9.90%)  | 105 ( 2.79%) | 11 ( 0.29%) |
|          | Thursday  | 213 ( 5.68%)            | 2937 (78.26%)  | 460 (12.26%)  | 138 ( 3.68%) | 5 ( 0.13%)  |
|          | Friday    | 171 ( 4.58%)            | 2967 (79.42%)  | 431 (11.54%)  | 159 ( 4.26%) | 8 ( 0.21%)  |
|          | Saturday  | 1127 (33.92%)           | 1738 (52.30%)  | 367 (11.04%)  | 90 ( 2.71%)  | 1 ( 0.03%)  |
|          | Overall   | 2284 ( 9.65%)           | 17723 (74.91%) | 2794 (11.81%) | 821 ( 3.47%) | 36 ( 0.15%) |
| Yes      | Sunday    | 66 ( 2.95%)             | 1671 (74.73%)  | 384 (17.17%)  | 114 ( 5.10%) | 1 ( 0.04%)  |
|          | Monday    | 274 ( 5.76%)            | 3767 (79.14%)  | 570 (11.97%)  | 141 ( 2.96%) | 8 ( 0.17%)  |
|          | Tuesday   | 419 ( 7.27%)            | 4340 (75.28%)  | 780 (13.53%)  | 214 ( 3.71%) | 12 ( 0.21%) |
|          | Wednesday | 333 ( 8.90%)            | 2862 (76.48%)  | 404 (10.80%)  | 136 ( 3.63%) | 7 ( 0.19%)  |
|          | Thursday  | 210 ( 5.65%)            | 2965 (79.83%)  | 406 (10.93%)  | 128 ( 3.45%) | 5 ( 0.13%)  |
|          | Friday    | 162 ( 4.39%)            | 2930 (79.32%)  | 445 (12.05%)  | 154 ( 4.17%) | 3 ( 0.08%)  |
|          | Saturday  | 102 ( 4.15%)            | 1909 (77.70%)  | 345 (14.04%)  | 97 ( 3.95%)  | 4 ( 0.16%)  |
|          | Overall   | 1566 ( 5.94%)           | 20444 (77.53%) | 3334 (12.64%) | 984 ( 3.73%) | 40 ( 0.15%) |

Table 2  
Church Layby From East, Vehicle Speeds by Cover and Day  
Week 2: 27Nov2018 - 03Dec2018, Week 3: 03Dec2018 - 10Dec2018

| Covered? | Day       | Recorded Speed<br>(mph) |                |               |               |             |
|----------|-----------|-------------------------|----------------|---------------|---------------|-------------|
|          |           | <20                     | 20 - 29        | 30 - 34       | 35 - 54       | >= 55       |
| No       | Sunday    | 198 ( 8.65%)            | 1366 (59.65%)  | 561 (24.50%)  | 162 ( 7.07%)  | 3 ( 0.13%)  |
|          | Monday    | 128 ( 3.75%)            | 2543 (74.44%)  | 575 (16.83%)  | 170 ( 4.98%)  | 0           |
|          | Tuesday   | 284 ( 7.44%)            | 2828 (74.13%)  | 560 (14.68%)  | 140 ( 3.67%)  | 3 ( 0.08%)  |
|          | Wednesday | 215 ( 5.85%)            | 2634 (71.71%)  | 669 (18.21%)  | 154 ( 4.19%)  | 1 ( 0.03%)  |
|          | Thursday  | 247 ( 5.93%)            | 3114 (74.80%)  | 627 (15.06%)  | 173 ( 4.16%)  | 2 ( 0.05%)  |
|          | Friday    | 2006 (37.39%)           | 2551 (47.55%)  | 640 (11.93%)  | 167 ( 3.11%)  | 1 ( 0.02%)  |
|          | Saturday  | 312 (10.67%)            | 1744 (59.66%)  | 697 (23.85%)  | 169 ( 5.78%)  | 1 ( 0.03%)  |
|          | Overall   | 3390 (13.22%)           | 16780 (65.43%) | 4329 (16.88%) | 1135 ( 4.43%) | 11 ( 0.04%) |
| Yes      | Sunday    | 107 ( 4.65%)            | 1370 (59.57%)  | 623 (27.09%)  | 200 ( 8.70%)  | 0           |
|          | Monday    | 453 (16.12%)            | 1706 (60.69%)  | 533 (18.96%)  | 119 ( 4.23%)  | 0           |
|          | Tuesday   | 57 ( 4.88%)             | 792 (67.75%)   | 249 (21.30%)  | 71 ( 6.07%)   | 0           |
|          | Wednesday | 197 ( 5.34%)            | 2536 (68.74%)  | 785 (21.28%)  | 171 ( 4.64%)  | 0           |
|          | Thursday  | 149 ( 3.87%)            | 2588 (67.17%)  | 881 (22.87%)  | 234 ( 6.07%)  | 1 ( 0.03%)  |
|          | Friday    | 166 ( 4.23%)            | 2653 (67.54%)  | 862 (21.95%)  | 244 ( 6.21%)  | 3 ( 0.08%)  |
|          | Saturday  | 58 ( 2.36%)             | 1470 (59.85%)  | 671 (27.32%)  | 257 (10.46%)  | 0           |
|          | Overall   | 1187 ( 5.87%)           | 13115 (64.91%) | 4604 (22.79%) | 1296 ( 6.41%) | 4 ( 0.02%)  |

Table 3

Church Layby from West, Vehicle Speeds 35 mph and above by Cover and Day

Week 1: 19Nov2018 - 27Nov2018, Week 4: 10Dec2018 - 17Dec2018

| Covered? | Day       | Recorded Speed<br>(mph) |             |             |             |            |            |
|----------|-----------|-------------------------|-------------|-------------|-------------|------------|------------|
|          |           | 35 - 44                 | 45 - 54     | 55-64       | 65-74       | 75- 84     | >= 85      |
| No       | Sunday    | 104 (91.23%)            | 9 ( 7.89%)  | 1 ( 0.88%)  | 0           | 0          | 0          |
|          | Monday    | 91 (88.35%)             | 8 ( 7.77%)  | 2 ( 1.94%)  | 1 ( 0.97%)  | 0          | 1 ( 0.97%) |
|          | Tuesday   | 108 (87.80%)            | 9 ( 7.32%)  | 1 ( 0.81%)  | 3 ( 2.44%)  | 1 ( 0.81%) | 1 ( 0.81%) |
|          | Wednesday | 97 (83.62%)             | 8 ( 6.90%)  | 5 ( 4.31%)  | 5 ( 4.31%)  | 1 ( 0.86%) | 0          |
|          | Thursday  | 130 (90.91%)            | 8 ( 5.59%)  | 1 ( 0.70%)  | 2 ( 1.40%)  | 2 ( 1.40%) | 0          |
|          | Friday    | 148 (88.62%)            | 11 ( 6.59%) | 1 ( 0.60%)  | 3 ( 1.80%)  | 4 ( 2.40%) | 0          |
|          | Saturday  | 86 (94.51%)             | 4 ( 4.40%)  | 1 ( 1.10%)  | 0           | 0          | 0          |
|          | Overall   | 764 (89.15%)            | 57 ( 6.65%) | 12 ( 1.40%) | 14 ( 1.63%) | 8 ( 0.93%) | 2 ( 0.23%) |
| Yes      | Sunday    | 104 (90.43%)            | 10 ( 8.70%) | 1 ( 0.87%)  | 0           | 0          | 0          |
|          | Monday    | 132 (88.59%)            | 9 ( 6.04%)  | 5 ( 3.36%)  | 1 ( 0.67%)  | 1 ( 0.67%) | 1 ( 0.67%) |
|          | Tuesday   | 194 (85.84%)            | 20 ( 8.85%) | 3 ( 1.33%)  | 5 ( 2.21%)  | 3 ( 1.33%) | 1 ( 0.44%) |
|          | Wednesday | 122 (85.31%)            | 14 ( 9.79%) | 3 ( 2.10%)  | 2 ( 1.40%)  | 0          | 2 ( 1.40%) |
|          | Thursday  | 119 (89.47%)            | 9 ( 6.77%)  | 2 ( 1.50%)  | 2 ( 1.50%)  | 1 ( 0.75%) | 0          |
|          | Friday    | 141 (89.81%)            | 13 ( 8.28%) | 2 ( 1.27%)  | 1 ( 0.64%)  | 0          | 0          |
|          | Saturday  | 86 (85.15%)             | 11 (10.89%) | 3 ( 2.97%)  | 1 ( 0.99%)  | 0          | 0          |
|          | Overall   | 898 (87.70%)            | 86 ( 8.40%) | 19 ( 1.86%) | 12 ( 1.17%) | 5 ( 0.49%) | 4 ( 0.39%) |

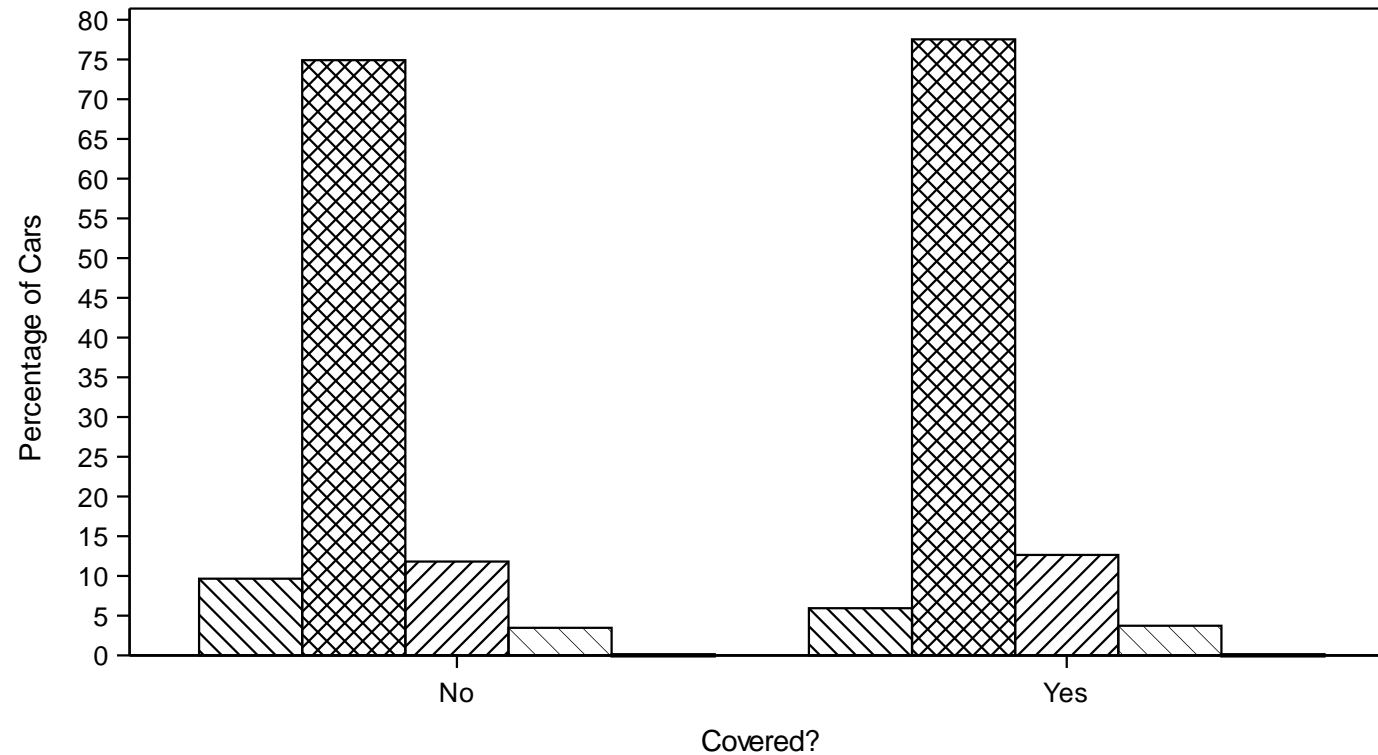
Church Layby 19November 2018 – 17December 2018

Table 4

Church Layby From East, Vehicle Speeds 35 mph and above by Cover and Day  
 Week 2: 27Nov2018 - 03Dec2018, Week 3: 03Dec2018 - 10Dec2018

| Covered? | Day       | Recorded Speed<br>(mph) |             |            |            |            |       |  |
|----------|-----------|-------------------------|-------------|------------|------------|------------|-------|--|
|          |           | 35 - 44                 | 45 - 54     | 55-64      | 65-74      | 75- 84     | >= 85 |  |
| No       | Sunday    | 152 (92.12%)            | 10 ( 6.06%) | 2 ( 1.21%) | 1 ( 0.61%) | 0          | 0     |  |
|          | Monday    | 151 (88.82%)            | 19 (11.18%) | 0          | 0          | 0          | 0     |  |
|          | Tuesday   | 127 (88.81%)            | 13 ( 9.09%) | 2 ( 1.40%) | 0          | 1 ( 0.70%) | 0     |  |
|          | Wednesday | 146 (94.19%)            | 8 ( 5.16%)  | 1 ( 0.65%) | 0          | 0          | 0     |  |
|          | Thursday  | 164 (93.71%)            | 9 ( 5.14%)  | 2 ( 1.14%) | 0          | 0          | 0     |  |
|          | Friday    | 158 (94.05%)            | 9 ( 5.36%)  | 1 ( 0.60%) | 0          | 0          | 0     |  |
|          | Saturday  | 155 (91.18%)            | 14 ( 8.24%) | 0          | 0          | 1 ( 0.59%) | 0     |  |
|          | Overall   | 1053 (91.88%)           | 82 ( 7.16%) | 8 ( 0.70%) | 1 ( 0.09%) | 2 ( 0.17%) | 0     |  |
| Yes      | Sunday    | 192 (96.00%)            | 8 ( 4.00%)  | 0          | 0          | 0          | 0     |  |
|          | Monday    | 112 (94.12%)            | 7 ( 5.88%)  | 0          | 0          | 0          | 0     |  |
|          | Tuesday   | 70 (98.59%)             | 1 ( 1.41%)  | 0          | 0          | 0          | 0     |  |
|          | Wednesday | 163 (95.32%)            | 8 ( 4.68%)  | 0          | 0          | 0          | 0     |  |
|          | Thursday  | 227 (96.60%)            | 7 ( 2.98%)  | 1 ( 0.43%) | 0          | 0          | 0     |  |
|          | Friday    | 230 (93.12%)            | 14 ( 5.67%) | 3 ( 1.21%) | 0          | 0          | 0     |  |
|          | Saturday  | 248 (96.50%)            | 9 ( 3.50%)  | 0          | 0          | 0          | 0     |  |
|          | Overall   | 1242 (95.54%)           | 54 ( 4.15%) | 4 ( 0.31%) | 0          | 0          | 0     |  |

Church Layby, Vehicle Speeds by Cover  
 Week 1: 19Nov2018 - 27Nov2018, Week 4: 10Dec2018 - 17Dec2018  
 From West

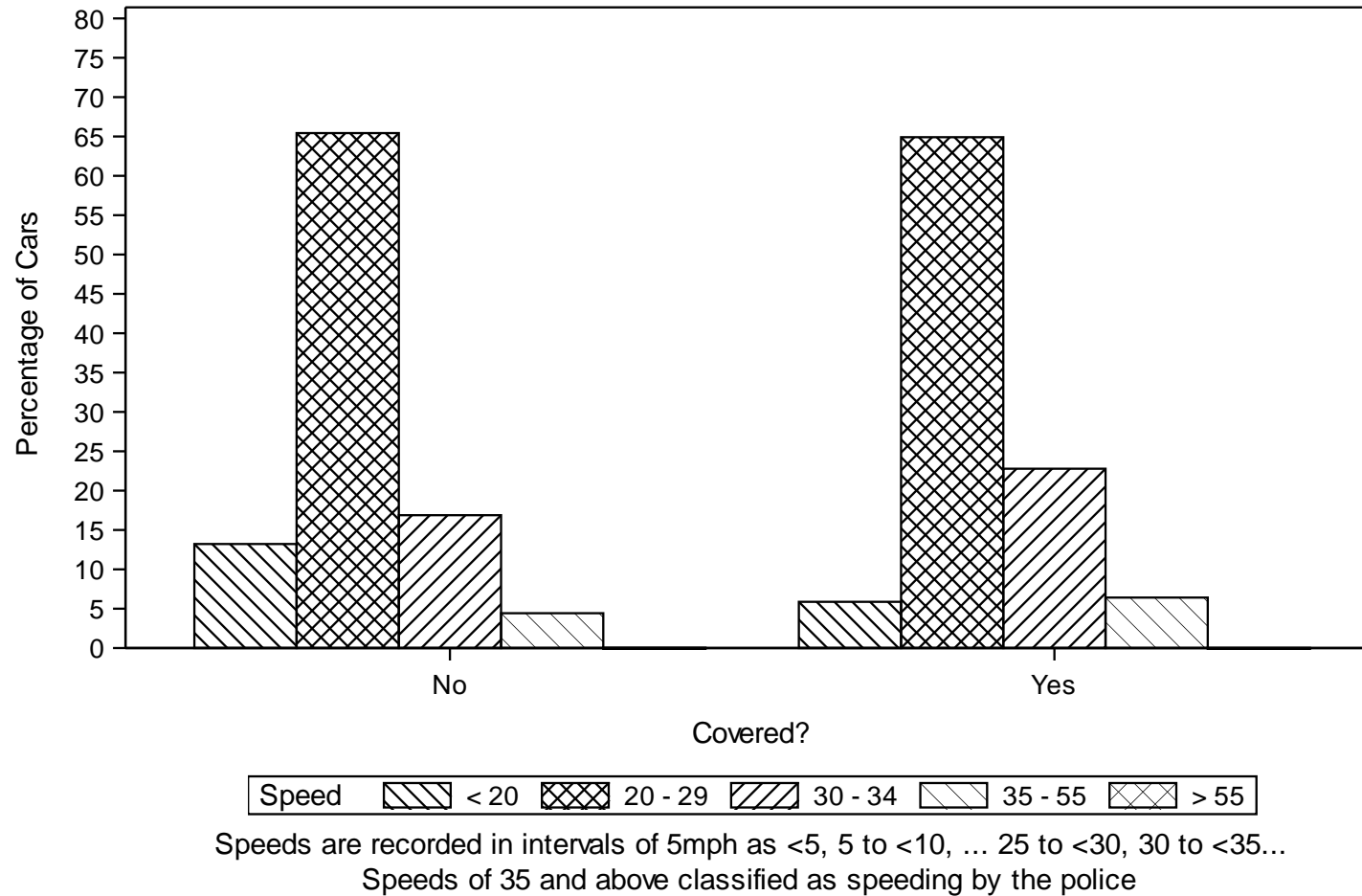


Speed < 20 20 - 29 30 - 34 35 - 55 > 55

Speeds are recorded in intervals of 5mph as <5, 5 to <10, ... 25 to <30, 30 to <35...

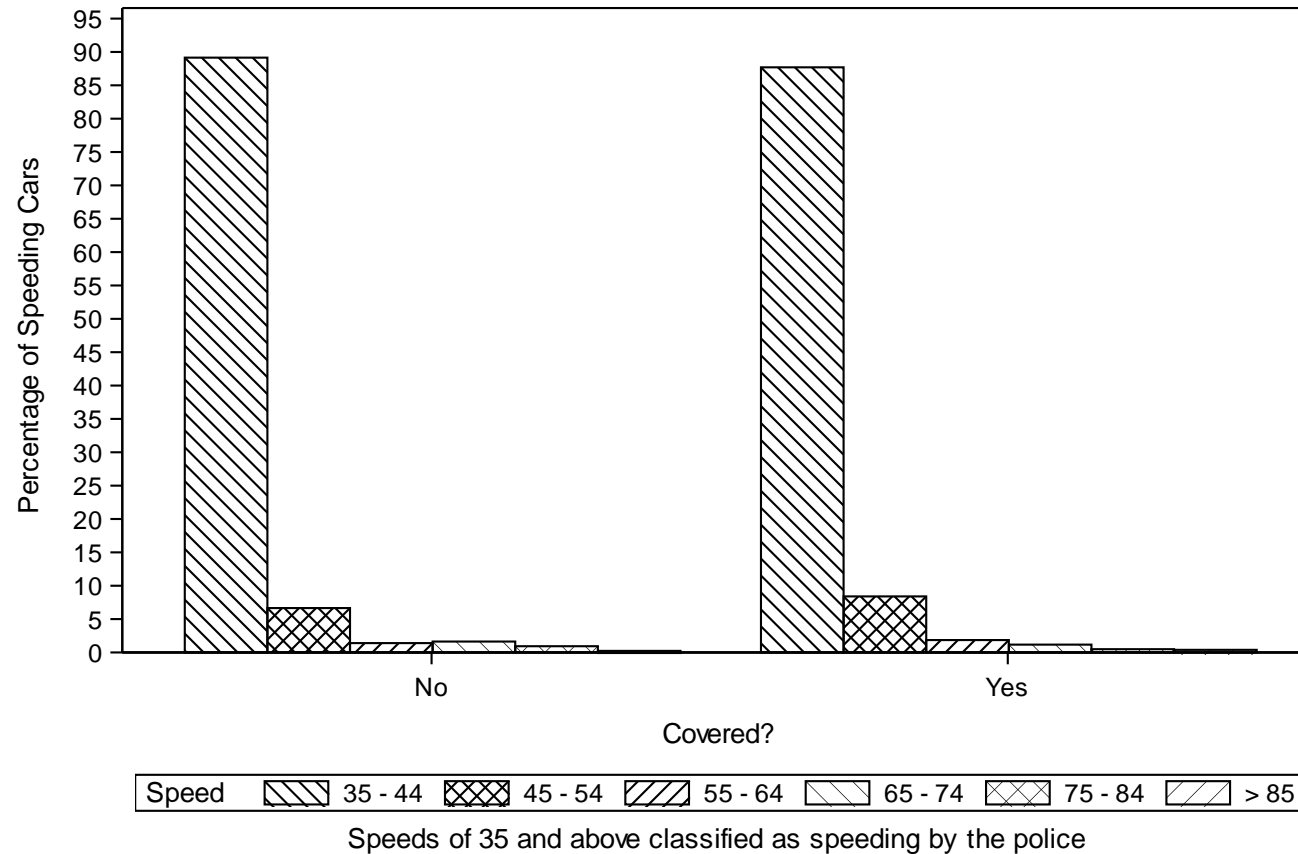
Speeds of 35 and above classified as speeding by the police

Church Layby, Vehicle Speeds by Cover  
 Week 2: 27Nov2018 - 03Dec2018, Week 3: 03Dec2018 - 10Dec2018  
 From East



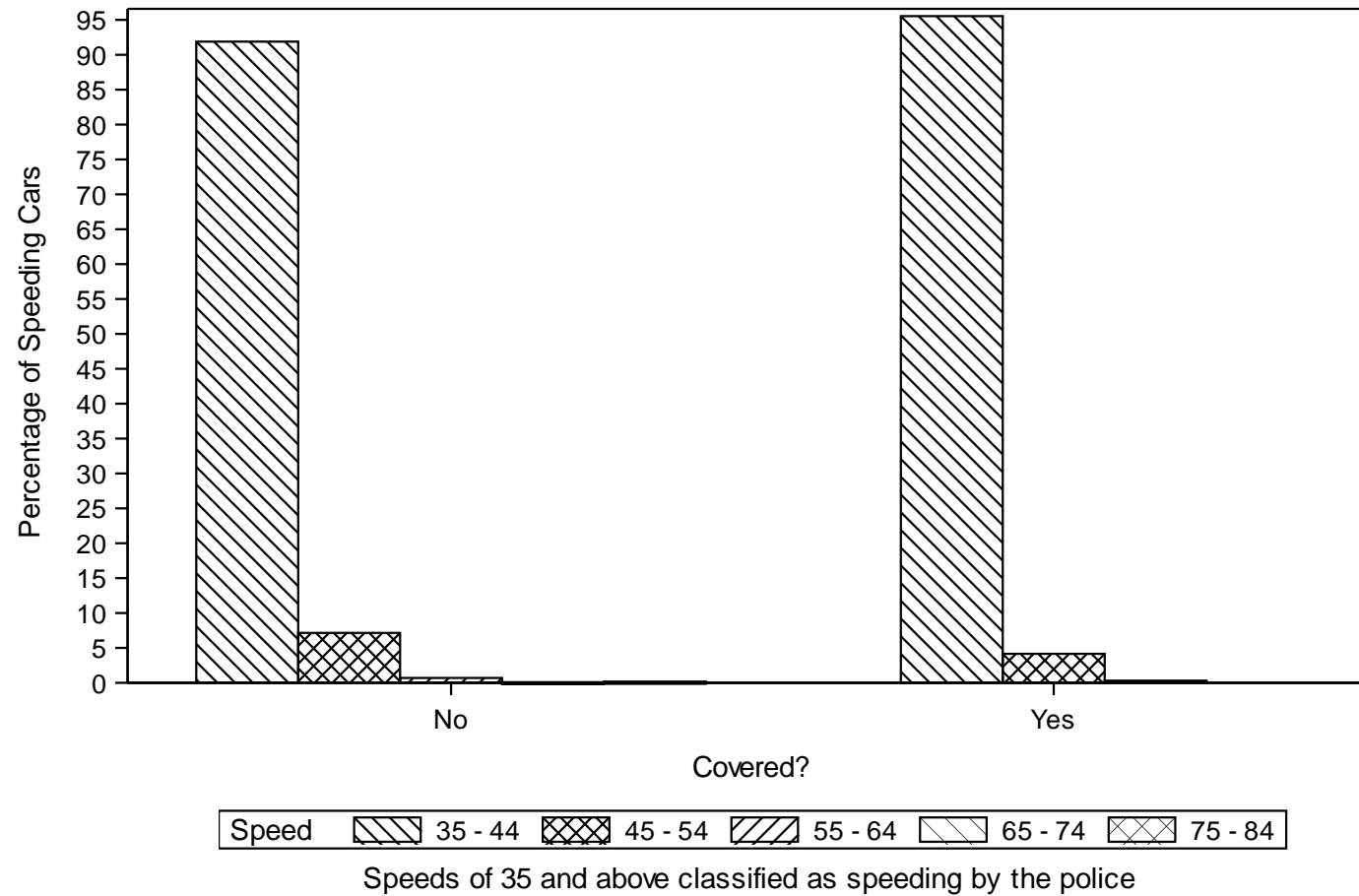
Church Layby 19November 2018 – 17December 2018

Church Layby, Vehicle Speeds > 35 mph  
 Week 1: 19Nov2018 - 27Nov2018, Week 4: 10Dec2018 - 17Dec2018  
 From West





Church Layby, Vehicle Speeds > 35 mph  
 Week 2: 27Nov2018 - 03Dec2018, Week 3: 03Dec2018 - 10Dec2018  
 From East



Church Layby 19November 2018 – 17December 2018